



Somerset

The Spirit of Southern Kentucky



Snow and Ice Removal Plan for City of Somerset 2023/2024

TABLE OF CONTENTS

	PAGE
<u>OVERVIEW</u>	<u>3.</u>
<u>RESPONSIBILITIES</u>	<u>4</u>
<u>PRIORITIES</u>	<u>5</u>
<u>CITIZEN RESPONSIBILITES AND TIPS</u>	<u>7</u>

APPENDICES

- 1. CITY OF SOMERSET COMMUNICATION FLOW**
- 2. PRIORITY ROUTES IN OUR CITY**
- 3. STATE ROADS**
- 4. EFFECTIVENESS OF SALT**

OVERVIEW

The purpose of the Snow and Ice Removal Policy is to communicate to our citizens, those working within the city, and our employees, how the City removes snow and ice from our streets, parking lots, and other areas. The goal of our city is to remove snow and ice from our roadways as rapidly, and efficiently as possible.

Snow and ice removal is a combined effort of the various departments within our city. The Street Department is responsible for the coordination of the departments and assigning work to ensure that our two hundred plus lane miles are either treated with salt or plowed. Inside the city limits, the Kentucky Department of Transportation Cabinet (KYTC) is responsible for salting and plowing many streets. Appendix 3 details these streets.

We begin planning for winter as soon as winter is over. Our equipment is inspected, repaired, if necessary, serviced, and stored in a protective environment after winter usage. We meet with our team to determine what, if any, changes need to be made to our plan so we can improve our performance. As winter approaches, we prepare our salt spreaders, and plows, and ensure that motors, lights, and all trucks are prepared for the winter. We meet with the team and discuss any changes that have been made and prepare our plans for the upcoming winter.

The Street Department is responsible for ordering and storing the salt we use. Beginning in 2024, we have moved our salt operation to a new facility at the Street Department. This facility allows to store the salt in a dry environment that will keep the salt not only dry, but loose, and this allows the salt to spread easier from our salt spreaders.

The ability to remove snow and ice from our streets will be different with each snow event. There are circumstances outside of our control that will dictate our ability to remove snow and ice. Below, please find a list of factors that may impact on our work.

- Rate of snowfall
- Temperature variance
- Traffic packing down the snow.
- Parked or stalled vehicles
- Wind
- Duration of the storm
- Freezing rain
- Timing of the storm

We consider all these factors while establishing our procedures for snow and ice removal in our work to minimize the impact on our community.

RESPONSIBILITIES

The primary responsibility for removing snow and ice from our city streets rests with the Street Department. The Street Department utilizes seven trucks equipped with salt spreaders and plows to fulfill this role. Our employees are each assigned a specific route and are responsible for specific streets. We also utilize trucks equipped with salt spreaders and plows from the Water Department, Parks Dept, and the Gas Department. These trucks are assigned streets and facilities to salt, and plow, so we can better, and quicker, treat our streets.

We monitor different weather outlets during winter months to try and piece together the most accurate forecast for our region. When we get a clear picture of the impending weather, we determine what actions are warranted. If during our normal working hours, we will be here and be ready. However, if the storm is predicted to start after scheduled work hours, we may determine to be at work and waiting for the inclement weather to start so we are prepared as soon as the conditions warrant.

We have ten trucks with salt spreaders and plows that we use to run our routes. Within these routes, we have certain areas we prioritize as these areas represent areas of safety concerns. The Police Department, Fire Department, Emergency Medical Services (EMS), Hospital, Fuel Center, and nursing homes, and certain streets, all receive priority attention to ensure these facilities, and streets can be accessed safely by first responders.

If a larger snowfall is expected, five inches or more, we encourage our citizens to take actions prior to the snowfall. If possible, we ask citizens to park their vehicles off the street so our employees can safely and efficiently clean the streets. Our plows are wide, and it takes considerable room to maneuver them, especially on some of our very tight streets. With vehicles on the street, it takes them longer to clean the streets as they must maneuver around the parked vehicles.

When we plow, driveways will have snow plowed in front of them. This is unavoidable as we cannot get the streets clear without this issue. While this is not our goal, it is the result. We cannot clear all the entrances to every driveway after we plow as this would consume all our time. We do apologize for this issue, but it is unavoidable.

When our team is working, we have a communication flow to keep our leaders and citizens informed. **Appendix 1** details communication within our city during a snow/ice event. The goal of our team is the safety of our public. Our team knows our responsibilities and with their knowledge and skill, they can complete these tasks.

PRIORITIES

During snow and ice events, priority is given to certain routes within our city. **Appendix 2** details these routes within our city. These routes are identified based on emergency services, locations of nursing homes and the ability to get to major routes. This does not lessen the importance of every citizen and street but does place priority on certain areas based on safety.

As previously stated, we monitor numerous weather outlets when a snow event is possible to get an accurate forecast for our region. While doing so, we determine what course of action we will take as a preventative nature. Normally, our winter weather starts as rain and transitions to snow when the temperature falls. We would like to be able to put down a layer of salt prior to a snow event, but with it starting as rain, it would wash the salt away. With that knowledge, we forgo, most of the time, this option. However, if we determine the snow event will begin as snow, we will place a layer of salt on our streets to keep the snow and ice from bonding so tightly to our streets.

The timing of a storm can affect snow and ice removal. Storms that occur during daytime hours will usually take longer to remove due to the amount of traffic on the streets. Should the snow be of a depth that requires plowing, we will start with our priority routes and work our way to all streets. Removing all snow and ice is not always achievable as there are various circumstances that may alter our efforts. Those include:

- Equipment breakdown,
- Equipment rendered inadequate by the depth of the snow,
- Employee breaks and stopping for re-fueling,
- Refilling deicing materials,
- Parked or stalled vehicles,
- Traffic packing down the snow,
- Rate of snowfall.,

As part of our snow removal plan, we focus on areas that deal with public safety first. Streets around our Fire Department locations, Police Department, EMS, Somerset Fuel Center, Nursing Homes, and the hospital will be our focus. These areas have a direct impact on public safety and will be prioritized to allow our first responders to access an emergency.

There are many roads within our city that we do not maintain as the KYTC is responsible for salting and plowing these roads. **Appendix 3** details the routes they are responsible for maintaining.

PRIORITIES

While we do have priority streets and areas, it does not minimize the importance of every street in our city. Every street is addressed and treated by our team. We do use a few larger vehicles that we utilize on the bigger, and wider streets in our city. This allows us to keep our smaller trucks and plows in our neighborhoods where they are more effective.

Our priorities are to service every street as quickly as possible. Our staff is knowledgeable of their routes, and the work that needs to be performed to complete this work. We ask our citizens to be patient with our employees as we fulfill our role of snow and ice removal. It takes time and just because the street where you reside is not on the priority list, it does not mean your street will not be cleaned.

While developing the plan, we kept in mind the realistic capabilities of our employees and our equipment. The routes we have chosen as a priority are based on traffic volume, access to emergency services, public safety, and access to major arteries. During a heavy snow event, it may be necessary for our employees to go over the priority streets several times prior to getting to the secondary streets. When these streets can be safely traveled, we focus on the secondary streets and service those.

Should the weather deteriorate and the rate of snowfall, or ice, becomes so great we cannot safely work, the mayor has the authority to declare a state of emergency. This authority was granted to the Mayor by ORDINANCE NUMBER 19-29. Should an emergency be set forth, all unauthorized persons will be asked to stay home and off the roads until the emergency is declared over.

CITIZEN RESPONSIBILITIES AND TIPS

Winter weather presents challenges that we do not face any other time of the year. As part of our plan, we have put together a list of responsibilities and tips that can help our citizens and our employees as we address the snow and ice event.

Before the snow or ice storm:

- Have your car checked for antifreeze, battery, and tires.
- Ensure your car is equipped with a flashlight, ice scraper, snow brush, blankets, and warning devices.
- Move your vehicle off the street so plows can clear the streets in a safe efficient manner.

During a snow or ice event:

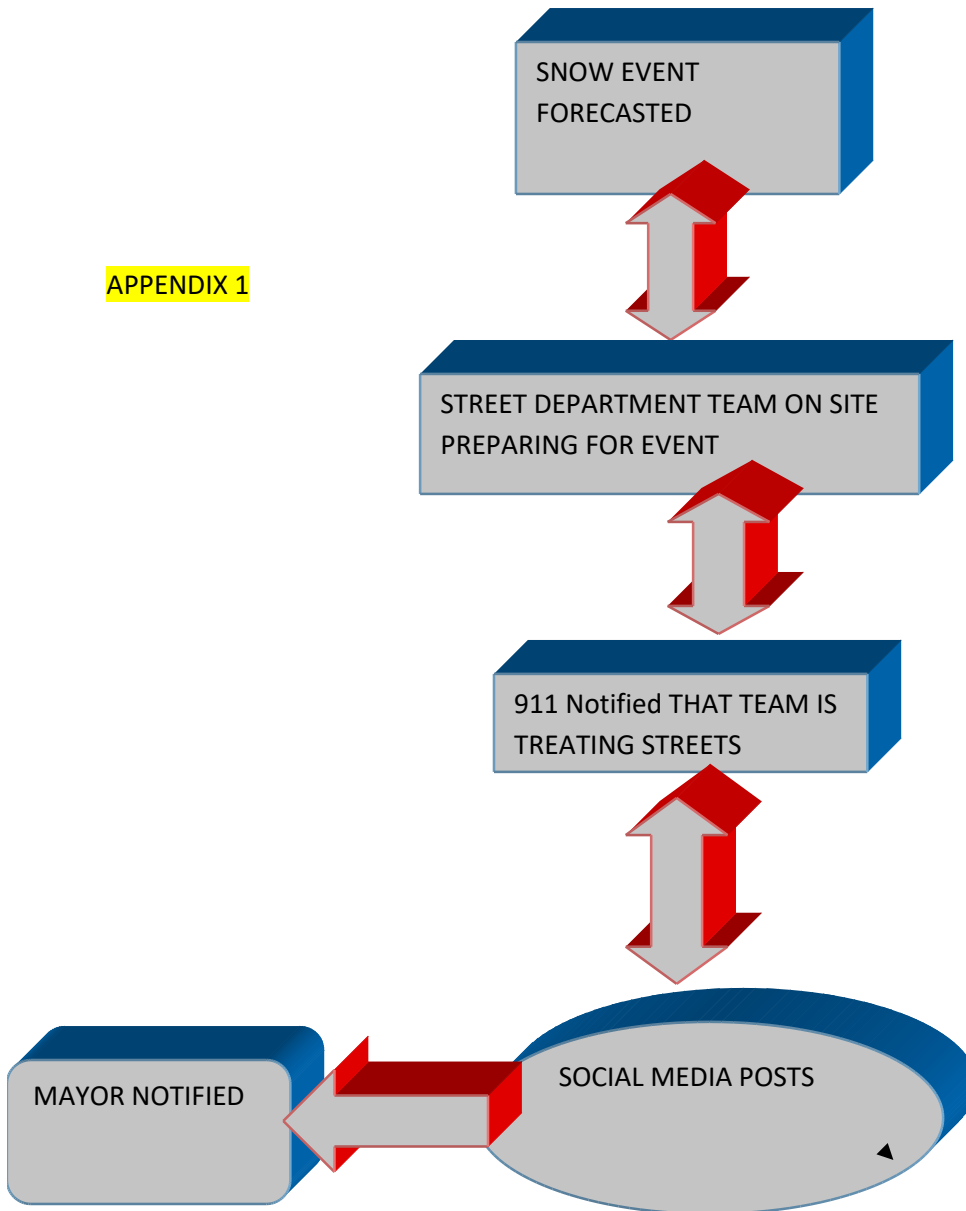
- Keep travel to a minimum unless an emergency does arise. If the mayor has declared a state of emergency, stay off the roads. If an emergency does arise, notify 911 and they can arrange care with the proper agency.
- If your car is parked outside, make sure the exhaust pipe and the area around it is clear before starting your vehicle. Restricted exhaust pipes can cause elevated levels of carbon monoxide inside your car.
- Keep snow clear from any hydrants in your yard.
- If you must travel, reduce your speed, and increase the following distances from the vehicle in front of you.
- Drive with your lights on always.
- Avoid hitting your brakes hard as this will cause the vehicle to skid,
- Make sure all your lights are free from snow so other motorists will be able to see your turn signals and brake lights.

After the snow or ice event:

- Please do not shovel the snow back to the street,
- Please do not shovel the snow on top of drains,
- Please allow time for our employees to achieve safe passage of the streets,
- Snowplows will be travelling slowly, so please be patient,
- Do not pass a snowplow,
- If following a plow, do not follow too closely as visibility will be diminished due to snow clouds coming from the plows.

CITY OF SOMERSET COMMUNICATION FLOW

APPENDIX 1



APPENDIX 2

PRIORITY ROUTES

Grand Central Blvd
Kit Cowan Rd
Jacksboro St
Industrial Park
Dearl Whitaker
Bourne Ave
Norfleet Dr
Hail Knob Rd
Bogle St
W. Columbia, from US 27 to W.80
Oak Leaf Lane
E. Somerset Church Rd
Chappells Dairy Rd
Sycamore St
Barnett St
Langdon St from US 27 to Hwy 80
S. Central Ave
Hamilton Lane
Tradepark Dr
E. Limestone St
W. Limestone St
N. Maple St
E. Oak St
W. Oak St
Kimberly Dr
Speedway Dr
Gover St
Linda Lane
Mountain View Dr
Greenside Dr
Cotter Ave
Mardis St
Brookhaven Dr
Hillandale Dr
Electric Ave
Beecher St
Grove St
Grand Ave
Crawford Ave
Sallee St
Alexander Dr

APPENDIX 3

Roads maintained by the State Highway Department

East and West Mt Vernon
Public Square
College St
North and South Main
Crab Orchard St
Highway 39
Pumphouse Rd
University Dr
North 1247
Highway 2227
US 27
Highway 914
Monticello St
South Richardson Dr
Highway 80
Bypass Eighty
Jarvis Ave
Murphy Ave
Ringgold Rd
Oak Hill Rd
Hwy 3057
Tigers Way
Langdon St from US27 to Old Monticello St
Old Monticello St from Langdon to New Monticello St
SCC WAY
Refinery Dr.
Clifty Rd. from US 27 to City limits

APPENDIX 4

EFFECTIVENESS OF SALT

ICE MELTED PER ONE POUND OF SALT AT TEMPERATURE

